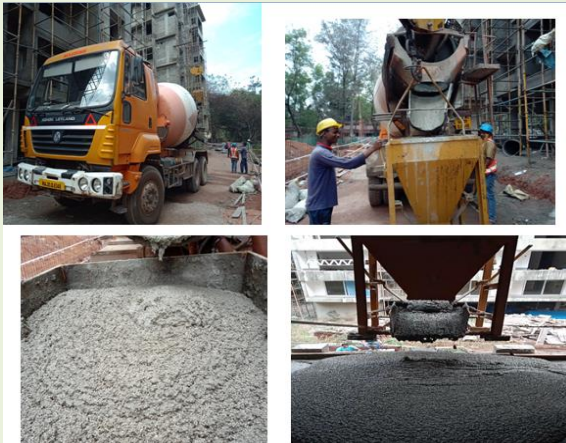


Replacing BBC with Elitecrete™ as a superior filler material

Volume supplied	7 cum
Area of application	Over sunken slab
Solution	Elitecrete™
Location	Mangalore
Duration	3 months



Execution of Elitecrete™



Project site execution of Elitecrete™

Project Description

This was a CPWD Project at National Institute of Technology, Surathkal, in Mangalore.

Challenges

For the sunken slab who's depth was 12 inches, customer was planning to use cinder or mixture of cement and sand as filler, over which a layer of plastering would be done. He wanted to place a filler material without increasing the deadload.

Solution

Since the application was mainly to reduce the structural dead load. RMC team recommended Elitecrete™. Elitecrete™ provides excellent sound and thermal insulator, easy to handle with superior finish.