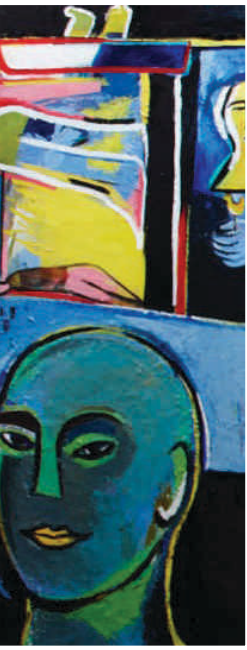


Dyecrete™



Mix with the Best



Promises to stay
colourful

Dyecrete™ from RMC Readymix (India) comprises an eye catching array of concrete that are suitable for a wide variety of architectural and decorative applications. These may either be everlasting through-coloured concrete mixes or a bandwagon of exotic textures that have been integrated on the concrete surface. They combine the aesthetic appeal with the long lasting durability of concrete.

Exciting colours, subtle shades & marvelous textures make Dyecrete™ an inimitable choice of architects and clients to exponentially enhance the visual appeal of the normally boring and grey coloured concrete.

5 key advantages:

1. Assortment of striking visual effects.
2. Opens up a whole new world of design opportunities.
3. Smart color options with durable surface.
4. Easy and fast installation.
5. Low on maintenance costs.

Applications:

- Pedestrian walkways, footpaths and cycle tracks.
- Floorings for parking areas, basements, etc.
- Artistic precast panels and products.
- Civic monuments and surrounds.
- Commercial and domestic flooring.



Dyecrete™ (Integral colour)



Dyecrete™ (Exposed Aggregate)



Dyecrete™ (Stamped)



RMC Readymix (India)

(A Division of Prism Cement Limited)

Mix with the Best

Windsor, 7th floor, C.S.T. Road, Near Vidyanagari, Kalina, Santacruz (E), Mumbai - 400 098.

Tel. : 91 22 26547000, 26526171/2/3/4 • Fax : 91 22 26547111 / 7123 • Toll Free No. : 1800 22 3454 / Mob. : 09769801903

Email : info@rmcindia.com • Website : www.rmcindia.com